

# EM-2RPT/21AU-R/L-P - Extension module



2909573

<https://www.phoenixcontact.com/us/products/2909573>

Please be informed that the data shown in this PDF document is generated from our online catalog. Please find the complete data in the user documentation. Our general terms of use for downloads are valid.



Relay extension module for ELR-...-P hybrid motor starters, feedback of forward and reverse running when control signal is present, Push-in connection, DIN rail connector included

## Commercial data

Item number	2909573
Packing unit	1 pc
Minimum order quantity	1 pc
Sales key	C472
Product key	CK7485
Catalog page	Page 26 (C-5-2019)
GTIN	4055626445489
Weight per piece (including packing)	168 g
Weight per piece (excluding packing)	168 g
Customs tariff number	85364190
Country of origin	DE

# EM-2RPT/21AU-R/L-P - Extension module



2909573

<https://www.phoenixcontact.com/us/products/2909573>

## Technical data

### Product properties

Product type	Extension module
Product family	CONTACTRON

### Electrical properties

#### Insulation characteristics

Rated insulation voltage	250 V
Rated surge voltage	4 kV
Degree of pollution	2

### Output data

Contact switching type	1 changeover contact
Rated operating voltage $U_e$	24 V DC
	230 V AC
Switching capacity in accordance with IEC 60947-5-1	3 A (230 V, AC15)
	2 A (24 V, DC13)

### Connection data

#### Load circuit

Connection method	Push-in connection
Stripping length	10 mm
Conductor cross section rigid	0.2 mm <sup>2</sup> ... 2.5 mm <sup>2</sup>
Conductor cross section flexible	0.2 mm <sup>2</sup> ... 2.5 mm <sup>2</sup>
Conductor cross section AWG	24 ... 14

#### INTERFACE system

Connection method	DIN rail bus connectors
Number of connections	1
Number of positions	5

### Dimensions

Width	22.5 mm
Height	106.6 mm
Depth	113.7 mm

### Environmental and real-life conditions

#### Ambient conditions

Degree of protection	IP20
Ambient temperature (operation)	-25 °C ... 70 °C
Ambient temperature (storage/transport)	-40 °C ... 80 °C

# EM-2RPT/21AU-R/L-P - Extension module



2909573

<https://www.phoenixcontact.com/us/products/2909573>

## Approvals

### UKCA

Certificate	UKCA-compliant
-------------	----------------

### UL approval

Certificate	NLDX.E228652
	NRNT.E172140

### UL data

Category code	NLDX / NRNT
Ambient temperature (operation)	-25 °C ... 55 °C

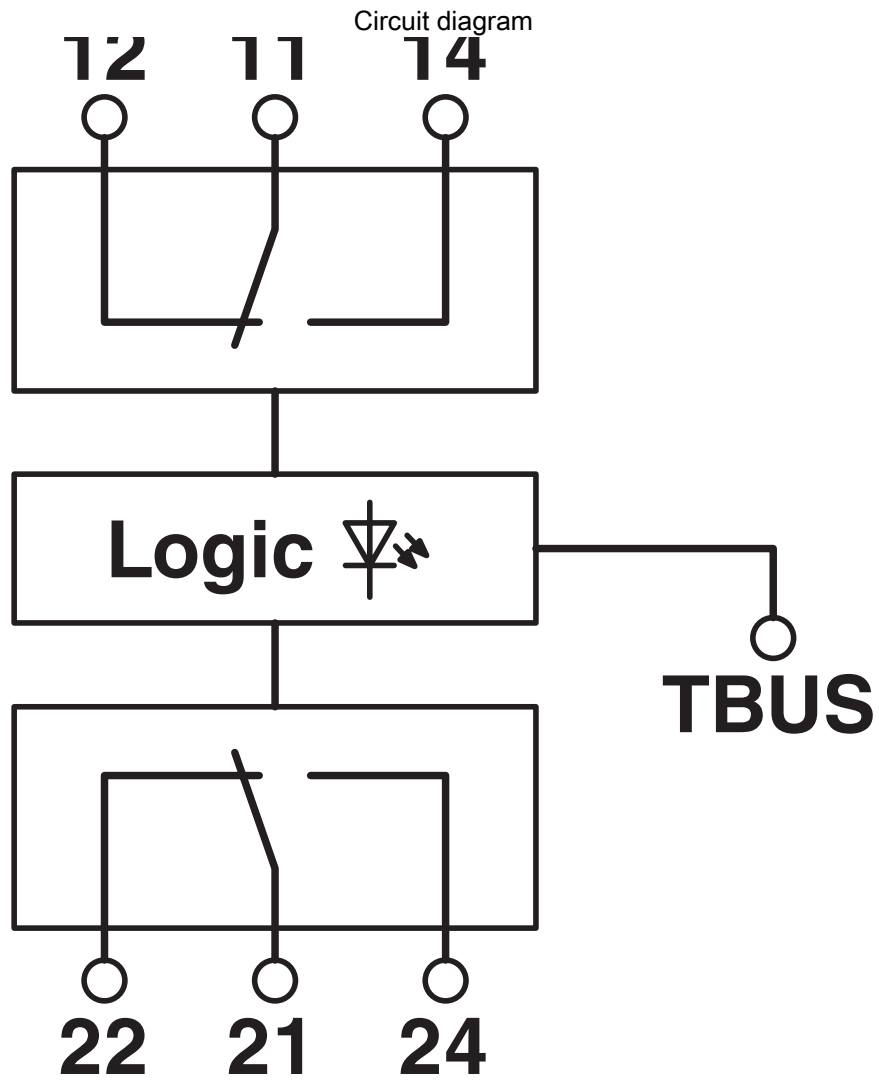
## Standards and regulations

Standards/regulations	IEC 60947-5-1
-----------------------	---------------

## Mounting

Mounting type	DIN rail mounting
Assembly instructions	in rows with zero spacing
Mounting position	Vertical (horizontal DIN rail)

Drawings



# EM-2RPT/21AU-R/L-P - Extension module



2909573

<https://www.phoenixcontact.com/us/products/2909573>

## Approvals

To download certificates, visit the product detail page: <https://www.phoenixcontact.com/us/products/2909573>



**EAC**

Approval ID: RU\*DE.\*08.B.01536/19



**UL Listed**

Approval ID: FILE E 172140



**cUL Listed**

Approval ID: FILE E 172140



**cUL Listed**

Approval ID: FILE E 228652



**UL Listed**

Approval ID: FILE E 228652

# EM-2RPT/21AU-R/L-P - Extension module



2909573

<https://www.phoenixcontact.com/us/products/2909573>

## Classifications

### ECLASS

ECLASS-11.0	27371601
ECLASS-12.0	27371601
ECLASS-13.0	27371601

### ETIM

ETIM 9.0	EC001437
----------	----------

### UNSPSC

UNSPSC 21.0	39122300
-------------	----------

# EM-2RPT/21AU-R/L-P - Extension module



2909573

<https://www.phoenixcontact.com/us/products/2909573>

## Environmental product compliance

REACH SVHC	Lead 7439-92-1
China RoHS	Environmentally Friendly Use Period = 50 years
	For information on hazardous substances, refer to the manufacturer's declaration available under "Downloads"

# EM-2RPT/21AU-R/L-P - Extension module



2909573

<https://www.phoenixcontact.com/us/products/2909573>

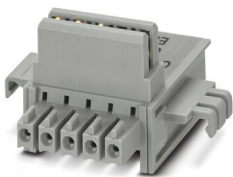
## Mandatory accessories

ELR-TBUS-22,5-P - DIN rail bus connectors

2203861

<https://www.phoenixcontact.com/us/products/2203861>

Special DIN rail connector only suitable for ELR H...-P and EM-...-P.



---

ELR H5-I-PT- 24DC/500AC-9-P02 - Hybrid motor starter

1160740

<https://www.phoenixcontact.com/us/products/1160740>

Modular hybrid motor starter for starting and reversing motors incl. motor protection and rotary field monitoring, input: 24 V DC, output: 3~, 500 V AC, 9 A, connection method: Push-in connection





# EM-2RPT/21AU-R/L-P - Extension module

2909573

<https://www.phoenixcontact.com/us/products/2909573>

## ELR H5-I-SC- 24DC/500AC-9-P - Hybrid motor starter

2908693

<https://www.phoenixcontact.com/us/products/2908693>



Hybrid motor starter as an alternative to a conventional reversing contactor. Reverses 3~ AC motors up to 9 A and offers motor protection. Possible supply and relay extension via DIN rail connector.

---

## ELR H3-I-SC- 24DC/500AC-9-P - Hybrid motor starter

2908694

<https://www.phoenixcontact.com/us/products/2908694>



Hybrid motor starter as an alternative to a conventional contactor circuit. Starts 3~ AC motors up to 9 A and offers motor protection. Possible supply and relay extension via DIN rail connector.

# EM-2RPT/21AU-R/L-P - Extension module



2909573

<https://www.phoenixcontact.com/us/products/2909573>

## ELR H5-I-SC- 24DC/500AC-3-P - Hybrid motor starter

2908695

<https://www.phoenixcontact.com/us/products/2908695>



Hybrid motor starter as an alternative to a conventional reversing contactor. Reverses 3~ AC motors up to 3 A and offers motor protection. Possible supply and relay extension via DIN rail connector.

---

## ELR H3-I-SC- 24DC/500AC-3-P - Hybrid motor starter

2908696

<https://www.phoenixcontact.com/us/products/2908696>



Hybrid motor starter as an alternative to a conventional contactor circuit. Starts 3~ AC motors up to 3 A and offers motor protection. Possible supply and relay extension via DIN rail connector.

# EM-2RPT/21AU-R/L-P - Extension module

2909573

<https://www.phoenixcontact.com/us/products/2909573>

## ELR H5-IS-SC- 24DC/500AC-9-P - Hybrid motor starter

2908697

<https://www.phoenixcontact.com/us/products/2908697>



Hybrid motor starter as an alternative to a conventional reversing contactor. Reverses 3~ AC motors up to 9 A, provides motor protection and emergency stop up to SIL 3 / PL e. Group shut-down, supply, and relay extension possible via DIN rail connector.

---

## ELR H3-IS-SC- 24DC/500AC-9-P - Hybrid motor starter

2908698

<https://www.phoenixcontact.com/us/products/2908698>



Hybrid motor starter as an alternative to a conventional protective circuit. Starts 3~ AC motors up to 9 A, provides motor protection and emergency stop up to SIL 3/PL e. Group shut-down, supply, and relay extension possible via DIN rail connector.

# EM-2RPT/21AU-R/L-P - Extension module

2909573

<https://www.phoenixcontact.com/us/products/2909573>

## ELR H5-IS-SC- 24DC/500AC-3-P - Hybrid motor starter

2908699

<https://www.phoenixcontact.com/us/products/2908699>



Hybrid motor starter as an alternative to a conventional reversing contactor. Reverses 3~ AC motors up to 3 A, provides motor protection and emergency stop up to SIL 3/PL e. Group shut-down, supply, and relay extension possible via DIN rail connector.

---

## ELR H3-IS-SC- 24DC/500AC-3-P - Hybrid motor starter

2908700

<https://www.phoenixcontact.com/us/products/2908700>



Hybrid motor starter as an alternative to a conventional protective circuit. Starts 3~ AC motors up to 3 A, provides motor protection and emergency stop up to SIL 3/PL e. Group shut-down, supply, and relay extension possible via DIN rail connector.

## EM-2RPT/21AU-R/L-P - Extension module

2909573

<https://www.phoenixcontact.com/us/products/2909573>



## ELR H5-IES-PT- 24DC/500AC-9-P - Hybrid motor starter

2909554

<https://www.phoenixcontact.com/us/products/2909554>



Hybrid motor starter as an alternative to a conventional reversing contactor. Reverses 3~ AC motors up to 9 A, provides motor protection, ATEX, and emergency stop up to SIL 3. Group shut-down, supply, and relay extension possible via DIN rail connector.

---

## ELR H3-IES-PT- 24DC/500AC-9-P - Hybrid motor starter

2909555

<https://www.phoenixcontact.com/us/products/2909555>



Hybrid motor starter as an alternative to a conventional protective circuit. Starts 3~ AC motors up to 9 A, provides motor protection, ATEX, and emergency stop up to SIL 3. Group shut-down, supply, and relay extension possible via DIN rail connector.

# EM-2RPT/21AU-R/L-P - Extension module

2909573

<https://www.phoenixcontact.com/us/products/2909573>



## ELR H5-IES-PT- 24DC/500AC-3-P - Hybrid motor starter

2909556

<https://www.phoenixcontact.com/us/products/2909556>



Hybrid motor starter as an alternative to a conventional reversing contactor. Reverses 3~ AC motors up to 3 A, provides motor protection, ATEX, and emergency stop up to SIL 3. Group shut-down, supply, and relay extension possible via DIN rail connector.

---

## ELR H3-IES-PT- 24DC/500AC-3-P - Hybrid motor starter

2909557

<https://www.phoenixcontact.com/us/products/2909557>



Hybrid motor starter as an alternative to a conventional protective circuit. Starts 3~ AC motors up to 3 A, provides motor protection, ATEX, and emergency stop up to SIL 3. Group shut-down, supply, and relay extension possible via DIN rail connector.

# EM-2RPT/21AU-R/L-P - Extension module

2909573

<https://www.phoenixcontact.com/us/products/2909573>



## ELR H5-I-PT- 24DC/500AC-9-P - Hybrid motor starter

2909560

<https://www.phoenixcontact.com/us/products/2909560>



Hybrid motor starter as an alternative to a conventional reversing contactor. Reverses 3~ AC motors up to 9 A and offers motor protection. Possible supply and relay extension via DIN rail connector.

---

## ELR H3-I-PT- 24DC/500AC-9-P - Hybrid motor starter

2909561

<https://www.phoenixcontact.com/us/products/2909561>



Hybrid motor starter as an alternative to a conventional contactor circuit. Starts 3~ AC motors up to 9 A and offers motor protection. Possible supply and relay extension via DIN rail connector.

# EM-2RPT/21AU-R/L-P - Extension module

2909573

<https://www.phoenixcontact.com/us/products/2909573>



## ELR H5-I-PT- 24DC/500AC-3-P - Hybrid motor starter

2909562

<https://www.phoenixcontact.com/us/products/2909562>



Hybrid motor starter as an alternative to a conventional reversing contactor. Reverses 3~ AC motors up to 3 A and offers motor protection. Possible supply and relay extension via DIN rail connector.

---

## ELR H3-I-PT- 24DC/500AC-3-P - Hybrid motor starter

2909563

<https://www.phoenixcontact.com/us/products/2909563>



Hybrid motor starter as an alternative to a conventional contactor circuit. Starts 3~ AC motors up to 3 A and offers motor protection. Possible supply and relay extension via DIN rail connector.



# EM-2RPT/21AU-R/L-P - Extension module

2909573

<https://www.phoenixcontact.com/us/products/2909573>

## ELR H5-IS-PT- 24DC/500AC-9-P - Hybrid motor starter

2909567

<https://www.phoenixcontact.com/us/products/2909567>



Hybrid motor starter as an alternative to a conventional reversing contactor. Reverses 3~ AC motors up to 9 A, provides motor protection and emergency stop up to SIL 3/PL e. Group shut-down, supply, and relay extension possible via DIN rail connector.

---

## ELR H3-IS-PT- 24DC/500AC-9-P - Hybrid motor starter

2909568

<https://www.phoenixcontact.com/us/products/2909568>



Hybrid motor starter as an alternative to a conventional protective circuit. Starts 3~ AC motors up to 9 A, provides motor protection and emergency stop up to SIL 3/PL e. Group shut-down, supply, and relay extension possible via DIN rail connector.

# EM-2RPT/21AU-R/L-P - Extension module



2909573

<https://www.phoenixcontact.com/us/products/2909573>

## ELR H5-IS-PT- 24DC/500AC-3-P - Hybrid motor starter

2909569

<https://www.phoenixcontact.com/us/products/2909569>



Hybrid motor starter as an alternative to a conventional reversing contactor. Reverses 3~ AC motors up to 3 A, provides motor protection and emergency stop up to SIL 3/PL e. Group shut-down, supply, and relay extension possible via DIN rail connector.

---

## ELR H3-IS-PT- 24DC/500AC-3-P - Hybrid motor starter

2909570

<https://www.phoenixcontact.com/us/products/2909570>



Hybrid motor starter as an alternative to a conventional protective circuit. Starts 3~ AC motors up to 3 A, provides motor protection and emergency stop up to SIL 3/PL e. Group shut-down, supply, and relay extension possible via DIN rail connector.

---

Phoenix Contact 2023 © - all rights reserved  
<https://www.phoenixcontact.com>

Phoenix Contact USA  
586 Fulling Mill Road  
Middletown, PA 17057, United States  
(+717) 944-1300  
[info@phoenixcon.com](mailto:info@phoenixcon.com)